



OPEN ACCESS

ORIGINAL ARTICLE

# A randomised phase I study of etrolizumab (rhuMab $\beta$ 7) in moderate to severe ulcerative colitis

Paul J Rutgeerts,<sup>1</sup> Richard N Fedorak,<sup>2</sup> Daan W Hommes,<sup>3</sup> Andreas Sturm,<sup>4</sup> Daniel C Baumgart,<sup>4</sup> Brian Bressler,<sup>5</sup> Stefan Schreiber,<sup>6</sup> John C Mansfield,<sup>7</sup> Marna Williams,<sup>8</sup> Meina Tang,<sup>8</sup> Jennifer Visich,<sup>8</sup> Xiaohui Wei,<sup>8</sup> Mary Keir,<sup>8</sup> Diana Luca,<sup>8</sup> Dimitri Danilenko,<sup>8</sup> Jackson Egen,<sup>8</sup> Sharon O'Byrne<sup>8</sup>

► Additional materials are published online only. To view these files please visit the journal online (<http://dx.doi.org/10.1136/gutjnl-2011-301769>).

<sup>1</sup>Department of Medicine, Division of Gastroenterology, University of Leuven, Leuven, Belgium

<sup>2</sup>University of Alberta, Edmonton, Alberta, Canada

<sup>3</sup>Center for Inflammatory Bowel Diseases, University of California Los Angeles, Los Angeles, California, USA

<sup>4</sup>U Charité Medical School, Humboldt-University of Berlin, Berlin, Germany

<sup>5</sup>University of British Columbia, Vancouver, British Columbia, Canada

<sup>6</sup>Christian Albrechts University, Kiel, Germany

<sup>7</sup>University of Newcastle upon Tyne, Newcastle upon Tyne, UK

<sup>8</sup>Genentech Research & Early Development, South San Francisco, California, USA

## Correspondence to

Professor Paul J Rutgeerts, Department of Medicine, Division of Gastroenterology, University of Leuven, Herestraat 49, 3052 Leuven, Belgium; paul.rutgeerts@uz.kuleuven.ac.be

Revised 11 April 2012  
Accepted 12 April 2012  
Published Online First  
20 June 2012



Open Access  
Scan to access more  
free content

**To cite:** Rutgeerts PJ, Fedorak RN, Hommes DW, et al. *Gut* 2013;**62**:1122–1130.

## ABSTRACT

**Objective** Etrolizumab (rhuMab  $\beta$ 7, anti- $\beta$ 7, PRO145223) is a humanised monoclonal antibody targeting the  $\beta$ 7 subunit of the heterodimeric integrins  $\alpha$ 4 $\beta$ 7 and  $\alpha$ E $\beta$ 7, which are implicated in leucocyte migration and retention in ulcerative colitis (UC). This randomised phase I study evaluated the safety and pharmacology of etrolizumab in patients with moderate to severe UC.

**Design** In the single ascending dose (SAD) stage, etrolizumab (0.3, 1.0, 3.0, 10 mg/kg intravenous, 3.0 mg/kg subcutaneous (SC) or placebo) was administered 4:1 (n=25) in each cohort. In the multiple dose (MD) stage, new patients received monthly etrolizumab (0.5 mg/kg SC (n=4), 1.5 mg/kg SC (n=5), 3.0 mg/kg SC (n=4), 4.0 mg/kg intravenous (n=5)) or placebo (n=5). The pharmacokinetics was studied and Mayo Clinic Score evaluated at baseline, day 29 (SAD), and days 43 and 71 (MD).

**Results** In the SAD stage, there were no dose limiting toxicities, infusion or injection site reactions. Two impaired wound healing serious adverse events occurred in two patients receiving etrolizumab. In the MD stage, there were no dose limiting toxicities, and no infusion or injection site reactions. Headache was the most common adverse event, occurring more often in etrolizumab patients. Anti-etrolizumab antibodies were detected in two subjects. The duration of  $\beta$ 7 receptor full occupancy was dose related. A clinical response was observed in 12/18 patients, and clinical remission in 3/18 patients treated with etrolizumab in the MD stage, compared with 4/5 and 1/5 placebo patients, respectively.

**Conclusion** Etrolizumab is well tolerated in moderate to severe UC. Further investigation is warranted.

## INTRODUCTION

Ulcerative colitis (UC) is a chronic inflammatory condition of the colon characterised by mucosal ulceration, rectal bleeding, diarrhoea, abdominal pain and sometimes extraintestinal manifestations.<sup>1</sup> UC may be complicated by severe bloody diarrhoea and toxic megacolon that requires colectomy.<sup>2</sup> Pharmacological management of UC currently relies on 5-aminosalicylates, corticosteroids, purine antimetabolites, calcineurin inhibitors such as tacrolimus and cyclosporine, and antitumour necrosis factor (anti-TNF) therapy. Corticosteroid dependence and probability of colectomy remain clinically

## Significance of this study

### What is already known on this subject?

- Migration of lymphocytes to the gut is a key feature of inflammation in inflammatory bowel disease.
- Selective antimigration therapies are currently developed and specific inhibition of homing of lymphocytes to the gut is currently aimed at for therapy.
- These new therapies target the  $\alpha$ 4 $\beta$ 7–MadCam-1 interaction.

### What are the new findings?

- Etrolizumab (antibodies to  $\beta$ 7) does inhibit the migration of lymphocytes to the gut and antagonises the retention of lymphocytes in the mucosa by blocking the  $\alpha$ E $\beta$ 7–E-cadherin interaction.
- This phase I study in severe ulcerative colitis shows suitable pharmacokinetics and the early safety of this treatment.
- Clinical improvement of the disease observed in treated patients warrants further phase II studies.

### How might it impact on clinical practice in the foreseeable future?

- We hypothesise that a therapy that blocks migration of lymphocytes to the gut and recruiting of effector lymphocytes from the gut would be more effective than therapies blocking migration alone.

significant challenges, the latter most commonly due to failed medical therapy.

Sustained remission in inflammatory bowel disease (IBD) with currently available therapies is achieved in no more than 20%–30% of patients with chronic disease.<sup>3–4</sup> Patients treated with anti-TNF therapy eventually lose response and are at risk of serious side effects.<sup>5–6</sup> Therefore, there is a need to develop more targeted therapies optimised for chronic use that can modify the disease while decreasing dependence on corticosteroids and the probability of progression to surgery, without compromising immune competence. New therapies should provide improved safety profiles

with sustained remission and mucosal healing, thereby preventing long-term complications in a greater proportion of patients, including patients who do not respond to standard of care.

Integrins are cell surface glycoproteins that play a role in leucocyte adhesion, signalling, proliferation and migration,<sup>7</sup> aiding in leucocyte recruitment from blood into both lymphoid and non-lymphoid tissues in a highly regulated manner.<sup>8</sup> Migration into the gastrointestinal tract is highly dependent on interactions between the  $\alpha 4\beta 7$  integrin expressed on the surface of the leucocyte and its ligand, mucosal addressin cell adhesion molecule (MAdCAM-1) expressed on endothelial cells.<sup>9</sup>  $\alpha 4\beta 7$  binds preferentially to MAdCAM-1 expressed on the high endothelial venules of mucosal-associated lymphoid tissues, and has limited binding to vascular cell adhesion molecule 1 (VCAM-1) and the fibronectin fragment CS-1.<sup>10–12</sup>  $\alpha 4\beta 7+$  Cells and MAdCAM-1 expression are elevated at sites of chronic inflammation such as in the intestinal tract of patients with UC.<sup>13 14</sup>

The  $\alpha E\beta 7$  integrin, another member of the  $\beta 7$  integrin family, is expressed exclusively on mucosal intraepithelial T lymphocytes.  $\alpha E\beta 7$  binds selectively to E-cadherin on epithelial cells and has been proposed to play a role in the retention of T cells in mucosal tissue,<sup>15–17</sup> which exhibit cytotoxicity against stressed or infected epithelial cells.<sup>18–20</sup> The expression of  $\alpha E\beta 7$  is elevated in UC and Crohn's Disease (CD) in the active phase of the disease,<sup>21 22</sup> and anti- $\alpha E\beta 7$  treatment attenuates experimental colitis in mice, implicating a role for  $\alpha E\beta 7+$  lymphocytes in experimental models of IBD.<sup>23</sup> Interestingly, genetic polymorphisms at the CDH1 locus, which encode E-cadherin, have been associated with susceptibility to UC.<sup>24 25</sup> In addition, CDH1 polymorphisms associated with CD may result in the generation of a truncated E-cadherin protein with abnormal intracellular accumulation and impaired plasma membrane localisation.<sup>26</sup> Studies of gene targeted animals with E-cadherin defects in the gut epithelium have demonstrated that this protein is critical for maintenance of intestinal epithelial integrity and defense.<sup>27 28</sup> Thus, while alterations in the E-cadherin homotypic interactions likely underlie the increased disease susceptibility associated with CDH1 polymorphisms, dysregulated E-cadherin expression or function may also result in altered  $\alpha E\beta 7+$  cell responses.

Etolizumab is a humanised IgG1 monoclonal antibody which targets the  $\beta 7$  subunit of the  $\alpha 4\beta 7$ <sup>29 30</sup> and  $\alpha E\beta 7$ <sup>15</sup> integrins with high affinity, blocking binding to their ligands, MAdCAM-1 and E-cadherin, respectively. Murine and primate studies indicate that etolizumab provides selective targeting of lymphocyte homing to mucosal sites, with limited to no effects on migration to non-mucosal tissues.<sup>31 32</sup> Amelioration of IBD in nonclinical models is associated with downmodulation and/or disappearance of  $\alpha 4\beta 7$  and  $\alpha E\beta 7$  cells from the inflamed mucosa.<sup>33–38</sup>

Etolizumab provides a dual approach mechanism of action for the treatment of IBD that involves inhibition of leucocyte trafficking to the gut (through blocking of  $\alpha 4\beta 7$ –MAdCAM-1 interactions) as well as inhibition of retention of leucocytes in the intraepithelial lining of the gut (through blocking  $\alpha E\beta 7$ –E-cadherin interactions), which may provide improved efficacy over currently available therapies.

## MATERIALS AND METHODS

A randomised, placebo-controlled, double-blind within-cohort study was designed to evaluate the safety and tolerability of etolizumab in patients with moderate to severe UC. Secondary objectives included the characterisation of the pharmacokinetic (PK) profile, and to conduct an initial assessment of

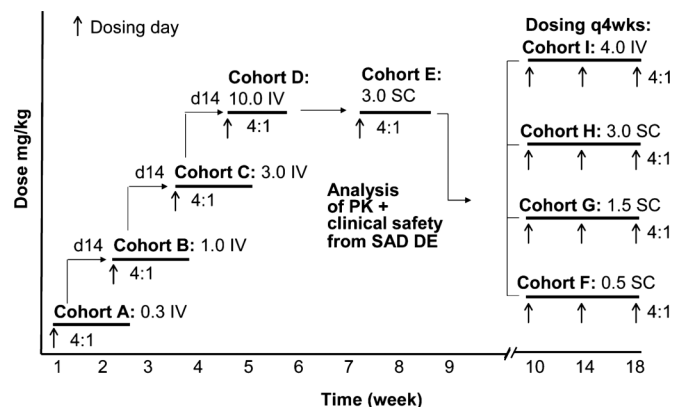
immunogenicity. Exploratory objectives were to evaluate pharmacodynamic (PD) properties and evaluate potential clinical activity. Study participants were recruited from 15 centres in Canada, the USA and Europe (the UK, Belgium, The Netherlands, Germany). Institutional review boards at each study site approved the protocol, and all subjects provided written informed consent. The trial was registered under US National Institutes of Health ClinicalTrials.gov identifier NCT00694980.

## Patients

Eligible patients included male and female subjects, 18–70 years of age, with a diagnosis of UC and a Mayo Clinic Score (MCS)<sup>39</sup> of  $\geq 5$  points at screening. Patients had a disease duration of  $\geq 12$  weeks at screening, and were on stable doses of oral 5-aminosalicylic acid (2.4–4.8 g/day) or oral steroids ( $\leq 20$  mg/day of prednisone or prednisone equivalent), or azathioprine, 6-mercaptopurine or methotrexate. Key exclusion criteria included hospitalisation due to severity of UC; evidence of moderate to severe anaemia (haemoglobin  $< 10$  g/dl); risk of infection including presence of JCV DNA in serum, such as ongoing or history of severe infections; recent live vaccinations; concomitant medications including anti-TNF, cyclosporine or tacrolimus within 3 months; and any manifestation of UC or other conditions likely to require, in the investigator's judgement, treatment with  $> 20$  mg/day of prednisone or prednisone equivalent.

## Study design

We initiated a randomised within cohort single ascending dose (SAD) stage followed by a randomised within cohort, multiple dose (MD), parallel-treatment stage. The interactive voice response system conducted the randomisation/treatment assignment through the use of a process designed by the biostatistician. In the SAD stage of the study, patients ( $n=5$ /cohort; 4 etolizumab to 1 placebo; total  $n=25$ ) were enrolled sequentially, in ascending doses, into five cohorts (Cohorts A–E) and treated with single intravenous or subcutaneous (SC) doses at one of four dose levels (0.3, 1.0, 3.0 or 10.0 mg/kg) (figure 1). Enrolment in one cohort was completed before the next cohort opened. In the first dose cohort (Cohort A, 0.3 mg/kg intravenous) no more than one patient was treated per 24 h, and each patient was monitored for 24 h for acute adverse reactions before the next patient was treated. Within subsequent cohorts (Cohorts B–E), dosing of the first two patients in each cohort was staggered by 24 h.



**Figure 1** Study design and patient flow. IV, intravenous; SC, subcutaneous; SAO, single ascending dose; DE, dose escalation.

Safety was evaluated after a cohort had completed enrolment and all patients in the cohort had completed follow-up through day 15. If the safety data were acceptable as determined by the number of dose limiting toxicities (DLTs), then enrolment of the subsequent cohort was initiated. Patients were followed for 18 weeks after the single dose of study drug was administered, with follow-up visits at days 1, 2, 4, 8, 15, 22, 29, 43, 57, 71, 99 and 127.

The MD parallel stage was commenced ~10 weeks after dosing was completed for the last patient treated in Cohort E (3.0 mg/kg SC) of the SAD stage, and was conditional on adequate PK properties being observed in the SAD stage and establishment of a maximum tolerated dose (MTD) for etrolizumab of >10 mg/kg intravenous. In the MD stage, patients were enrolled concurrently and randomised within cohort to receive placebo (n=5) or etrolizumab at the following doses: 0.5 mg/kg SC (Cohort F; n=4), 1.5 mg/kg SC (Cohort G; n=5), 3.0 mg/kg SC (Cohort H; n=4) or 4.0 mg/kg intravenous (Cohort I; n=5). In the MD stage, no patients were enrolled who participated in the SAD stage.

Patients were treated with single intravenous or SC doses every 4 weeks for three cycles, at days 1, 29 and 57. Patients were followed for safety for 20 weeks (through day 197) after the final dose of study drug was administered during the MD stage of the study.

## Assessments

### Safety

Safety data were assessed at each visit and graded according to the National Cancer Institute Common Toxicity Criteria Adverse Event (NCI CTCAE), V3.0. A DLT was defined as any NCI CTCAE Grade  $\geq 3$  adverse event (AE) occurring within 14 days of study drug administration during the SAD stage of the study. Grade 3 infusion related toxicities were considered DLTs. Exacerbation of UC was not considered a DLT. The MTD was defined as the dose level below the one at which  $\geq 2$  patients treated with etrolizumab experienced a DLT. It was determined in the protocol that if no more than one patient experienced a DLT in each of the five SAD cohorts, the MTD will not have been defined and the highest tested dose will be 10 mg/kg intravenous.

All patients were required to have undetectable JCV DNA in the serum in order to take part in the study. Each patient underwent regular cognitive assessment and completed a progressive multifocal leucoencephalopathy (PML) symptom assessment interview during the treatment and safety follow-up stages of the study. Any patient who developed detectable JCV DNA in the serum during the study had neurological assessment by a neurologist and a brain MRI. There was also a PML expert panel available to evaluate and adjudicate in real time any suspected cases of PML. After completion of the safety follow-up stage of the study, as per the study risk-monitoring plan, patients were monitored for signs and symptoms of PML for a total of 2 years following initial dosing with the study drug using the PML Symptom Assessment Interview. Total and differential white cell count was also measured during the 2-year follow-up.

### Pharmacokinetics

In the SAD stage of the study, PK serum samples were obtained predose, postdose on study day 1 (1 h-intravenous only and 4 h) and then on study days 2, 4, 8, 15, 22, 29, 43, 57, 71, 99 and 127 (or at early treatment termination). In the MD stage, PK serum samples were obtained on days 1 (predose, 1 h postdose-intravenous only, 4 h postdose), days 2, 15 and 29

(predose, 1 h postdose-intravenous only, 4 h postdose), days 30, 43 and 57 (predose, 1 h postdose-intravenous only, 4 h postdose) and days 58, 60, 64, 67, 71, 85, 99, 113, 141, 169 and 197 (or at early treatment termination).

Etrolizumab concentration was determined using a validated ELISA assay with a lower limit of quantification of 0.0125  $\mu\text{g/ml}$ . The following PK parameters were assessed: maximum serum concentration ( $C_{\text{max}}$ ), area under concentration–time curve from time 0 to infinity, SAD (AUC), area under concentration–time curve during a dosing interval, MD (AUC<sub>t</sub>), total body clearance at steady state after intravenous doses ( $CL_{\text{ss}}$ ) or apparent total body clearance at steady state after SC doses ( $CL_{\text{ss}}/F$ ) and elimination half-life ( $t_{1/2z}$ ). PK parameters were calculated using a standard non-compartmental method with the computer program WinNonlin V5.2.1 (Pharsight Corporation, Mountain View, California, USA).

For antitherapeutic antibody (ATA) measurement, serum samples were collected at study days 1 (predose) and days 15, 29, 57, 99 and 127 in the SAD stage. For the MD stage, samples were collected at days 1 (predose), day 29 (predose), day 57 (predose) and days 64, 85, 113, 141, 169 and 197.

Serum was analysed for the development of ATAs using a validated antibody-bridging electrochemiluminescence assay. Serum samples were first screened for the presence of ATAs. Samples that screened positive for ATA were confirmed by immunodepletion. Samples with confirmed ATA responses were further diluted to obtain titre values. ATAs in serum were detected with a minimum reportable titre of 1.30 titre units (corresponding to a minimum 1/20 sample dilution).

### PD evaluations

Drug occupancy on target CD4+ lymphocytes ('available'  $\beta 7$  receptors) following single or multiple intravenous or SC administration of etrolizumab was evaluated on subsets of CD4 + T cells in peripheral blood of patients. CD4+ T cells were assessed by flow cytometry according to expression of CD45RA and  $\beta 7$ , and phenotypically subdivided according to homing properties into subsets of CD4+CD45RA- $\beta 7^{\text{high}}$  T cells (mucosal-homing), CD4+CD45RA- $\beta 7^{\text{low}}$  T cells (peripheral homing) and CD4+ CD45RA+ T cells (cells that traffic well to both intestinal and peripheral lymph nodes and tissues).<sup>40</sup>

In the SAD stage of the study, peripheral blood samples were obtained at screen, day 1 (predose) and days 2, 8, 15, 22, 29, 43, 57, 71, 99 and 127. In the MD stage, peripheral blood samples were obtained at screen, day 1 (predose), days 2, 15 and 29 (predose), days 30, 43 and 57 (predose) and days 58, 64, 72, 85, 99, 113, 141, 169 and 197.

Occupancy of etrolizumab was assessed using fluorescently-labelled etrolizumab. The absolute number (ABS) of T lymphocyte subsets was assessed at each time point and expressed as a percentage of predose baseline (% BL) T lymphocytes. Baseline was defined as the average of the predose (screen and day 1 predose) values. For each cohort, the mean absolute count (% BL) for patients treated with etrolizumab was calculated. Placebo patients from the single and MD cohorts were combined and used as the controls for the single and MD analyses, respectively.

### Correlative analysis of pharmacokinetics and pharmacodynamics

A total of 38 etrolizumab treated patients were evaluated to determine the minimal serum etrolizumab concentration that is required to maintain full occupancy of the  $\beta 7$  integrin. Five of the 38 treated patients were excluded from the PK/PD analysis due to missing PK and PD values as they terminated early from the study.

### Clinical activity

Exploratory analyses were conducted for the SAD and MD stages to evaluate the effect of etrolizumab on the MCS compared with baseline on days 29 (SAD only) and days 43 and 71 (MD stage only). A clinical response was defined as  $\geq 3$  points and 30% reduction from baseline in MCS, and  $\geq 1$  point decrease in rectal bleeding subscore or absolute rectal bleeding score of 0 or 1. Clinical remission was defined as MCS  $\leq 2$  with no individual subscore exceeding 1 point.

### Statistical analysis

The cohort sample size was determined by estimating the minimum number of patients required to safely escalate at different DLT rates to the next dose level in the SAD. All patients who received at least one dose of study drug or placebo were included in the safety, PK and PD analyses. AEs, vital signs, laboratory tests, PK, PD and disease activity measurements were descriptively compared across the various treatment groups with no formal statistical testing.

## RESULTS

### Study population

Patient characteristics were similar between active drug and placebo recipients (table 1) in both the SAD and MD stages of the study. Information on previous therapy with anti-TNF was not available for patients who took part in the SAD stage of the study. In the MD stage, concomitant treatment for UC was imbalanced between placebo and the active treatment arms with a greater proportion of placebo patients receiving concomitant corticosteroid therapy (80% placebo vs 44% for etrolizumab). In addition, among patients who received active treatment with etrolizumab, there were a greater proportion of patients who had been treated with anti-TNF therapy (76% etrolizumab vs 40% on placebo). The mean MCS for patients participating in the phase I study was  $9.0 \pm 1.7$  (SD) indicating they had severe UC.

The demographics and baseline characteristics for patients enrolled in the SAD and MD stages, per cohort, are presented in Supplementary table 1. Although each cohort has data for only four or five patients, these covariates appear balanced across cohorts. The only covariate with a high variability is disease duration, higher in the 1 mg/kg intravenous and 3 mg/kg intravenous than the other SAD cohorts.

### Patient disposition

Overall, 26 patients in the etrolizumab group and seven patients in the placebo group completed the study. Of the 25 subjects enrolled in the SAD stage, seven subjects discontinued early from the study, five in the etrolizumab treated groups and two in the placebo group. Of the 23 subjects enrolled in the MD stage, eight subjects discontinued early from the study: seven in the etrolizumab treated groups and one in the placebo group. Subject disposition and the reasons for premature discontinuation for subjects treated during the SAD and MD stages of the study are presented in table 2.

### Safety

Etrolizumab was well tolerated during the study. The overall incidence of treatment-related AEs was marginally higher in the active treatment group (table 3), and occurred in the first 24 h of treatment. There was no dose-dependent increase in the incidence of AEs. Headache was the most common AE occurring more often in actively treated patients. No DLTs or clinically significant infusion reactions or injection site reactions were reported.

Eight patients had serious AEs: seven in the SAD stage (6:1; etrolizumab:placebo) and one in the MD stage (1:0; etrolizumab:placebo). Exacerbation of UC was the most common serious AE. There were two patients with impaired wound healing posturgent colectomy for exacerbation of UC. Both patients had severe UC with baseline MCS of 9 and 11. Each patient received a single dose of etrolizumab at dose levels of 1 mg/kg intravenous and 3 mg/kg SC, respectively. There were significant confounding factors for impaired wound healing such as the use of high dose steroids, hypoalbuminemia, type 2 diabetes mellitus and obesity in one patient, and hypoalbuminemia and obesity in the second patient. Two other patients also underwent colectomy after exposure to single doses of etrolizumab in the phase I study without any postoperative complications.

Two patients, one in the SAD stage and one in the MD stage, developed transient low level JCV shedding into the serum at levels of 20–30 viral copies/ml. Neither patient developed any symptoms suggestive of PML and both had no significant abnormalities on brain MRI.

### Pharmacokinetics

The PK behaviour of etrolizumab was generally consistent with that of a typical humanised IgG1 monoclonal antibody (figure 2). The PK profile of etrolizumab is generally linear and dose

**Table 1** Patient demographics and baseline characteristics

	Etrolizumab SAD (n=20)	Placebo SAD (n=5)	Etrolizumab MD (n=18)	Placebo MD (n=5)
Gender, male (%)	15 (75)	2 (40)	13 (72)	3 (60)
Age (years), mean (SD)	40.3 (10.5)	30.2 (11)	44 (14)	39 (19)
Disease duration years, median (range)	8 (2–24)	6 (5–29)	6.5 (2–30)	5.3 (2–25)
Concomitant drug treatment, n (%)				
5-ASA	12 (60)	4 (80)	12 (67)	2 (40)
Azathioprine	3 (15)	1 (20)	2 (11)	1 (20)
Mercaptopurine	2 (10)	0 (0)	0 (0)	0 (0)
Methotrexate	1 (5)	0 (0)	1 (6)	0 (0)
Corticosteroids	11 (55)	3 (60)	8 (44)	4 (80)
Previous anti-TNF therapy, n (%)	NA	NA	13 (72)	2 (40)
Baseline MCS, median (range)	9 (5–12)	9 (7–10)	10 (4–12)	10 (8–11)

5-ASA, 5-aminosalicylic acid; MCS, Mayo Clinic Score; MD, multiple dose; NA, not applicable; SAD, single ascending dose; TNF, tumour necrosis factor.

**Table 2** Study completion status

SAD stage							
No. (%) of patients	Placebo (n=5)	0.3 mg/kg IV (n=4)	1.0 mg/kg IV (n=4)	3.0 mg/kg IV (n=4)	3.0 mg/kg SC (n=4)	10.0 mg/kg IV (n=4)	All active (n=20)
Study completion status							
Subjects completed study	3 (60)	3 (75)	4 (100)	2 (50)	3 (75)	3 (75)	15 (75)
Subjects discontinued early	2 (40)	1 (25)	0 (0)	2 (50)	1 (25)	1 (25)	5 (25)
Reasons for study termination							
Physician decision to withdraw subjects from study	2 (40)	1 (25)	0 (0)	0 (0)	0 (0)	0 (0)	1 (5)
Subjects' decision to withdraw	0 (0)	0 (0)	0 (0)	0 (0)	1 (25)	1 (20)	2 (10)
Adverse event	0 (0)	0 (0)	0 (0)	2 (50)	0 (0)	0 (0)	2 (10)
MD stage							
No. (%) of patients	Placebo (n=5)	0.5 mg/kg SC (n=4)	1.5 mg/kg SC (n=5)	3.0 mg/kg SC (n=4)	4.0 mg/kg IV (n=5)	All Active (n=18)	
Study completion status							
Subjects completed study	4 (80)	3 (75)	2 (40)	2 (50)	4 (80)	11 (61)	
Subjects discontinued early	1 (20)	1 (25)	3 (60)	2 (50)	1 (20)	7 (39)	
Reasons for study termination							
Physician decision to withdraw subjects from study	0 (0)	0 (0)	1 (20)	1 (25)	0 (0)	2 (11)	
Subjects' decision to withdraw	1 (20)	0 (0)	1 (20)	1 (25)	0 (0)	2 (11)	
Adverse event	0 (0)	1 (25)	1 (20)	0 (0)	1 (20)	3 (17)	

IV, intravenous; MD, multiple dose; SAD, single ascending dose; SC, subcutaneous.

**Table 3** Safety outcomes

No. (%) of patients	Etrolizumab (SAD + MD) (n=38)		Placebo (n=10)	
	All-cause	Treatment-related	All-cause	Treatment-related
Adverse events				
Any event	36 (95)	19 (50)	10 (100)	6 (60)
Exacerbation of UC	16 (42)	1 (3)	8 (80)	0 (0)
Headache	12 (32)	4 (11)	2 (20)	0 (0)
Fatigue	6 (16)	2 (5)	0 (0)	0 (0)
Abdominal pain	6 (16)	0 (0)	1 (10)	0 (0)
Dizziness	5 (13)	2 (5)	1 (10)	0 (0)
Nasopharyngitis	6 (16)	1 (3)	2 (20)	1 (10)
Nausea	5 (13)	4 (11)	1 (10)	0 (0)
Arthralgia	4 (11)	1 (3)	0 (0)	0 (0)
Urinary tract infection	4 (11)	2 (5)	0 (0)	0 (0)
Back pain	2 (5)	2 (5)	2 (20)	1 (10)
Vision blurred	2 (5)	1 (3)	0 (0)	0 (0)
Upper respiratory tract infection	2 (5)	1 (3)	2 (20)	0 (0)
Conjunctivitis	1 (3)	1 (3)	0 (0)	0 (0)
Gastroenteritis	1 (3)	0 (0)	1 (10)	1 (10)
Serious adverse events				
Any event	7 (18)	2 (5)	1 (10)	0 (0)
Exacerbation of UC	4 (11)	0 (0)	1 (10)	0 (0)
Impaired wound healing	2 (5)	2 (5)	0 (0)	0 (0)
Bacterial peritonitis	1 (3)	1 (3)	0 (0)	0 (0)
Abdominal pain	1 (3)	0 (0)	0 (0)	0 (0)
Gastroenteritis	1 (3)	0 (0)	0 (0)	0 (0)
Renal colic	1 (3)	0 (0)	0 (0)	0 (0)
Infections and infestations				
Any event	17 (45)	7 (18)	4 (40)	3 (30)

MD, multiple dose; SAD, single ascending dose; UC, ulcerative colitis.

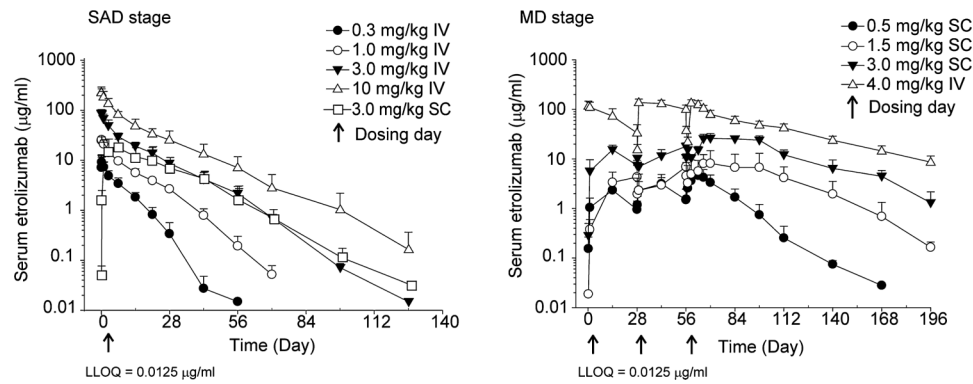
proportional with regard to  $C_{max}$  and AUC (SAD) or  $AUC_{\tau}$  (MD) within the dose range tested. A slight trend of nonlinearity was observed at doses  $\leq 1.0$  mg/kg, possibly due to target-mediated clearance at lower etrolizumab serum concentrations. The slight non-linearity of PK at doses  $\leq 1.0$  mg/kg resulted in a shorter mean  $t_{1/2z}$  at lower doses (4.8–7.4 days at 0.3–1 mg/kg) compared with higher doses (10.6–13.1 days at 3–10 mg/kg). These slight differences in half-life and PK linearity had no impact on the exposures ( $C_{max}$ , AUC) and the overall PK dose proportionality across the dose ranges tested. The apparent bioavailability following a single SC administration, based on cross-cohort comparison with intravenous single dose, was estimated to be approximately 67% at 3 mg/kg. Mean  $CL_{ss}/F$  ranged from 5.1 to 10.1 ml/day/kg following multiple SC doses and showed no time-dependent changes as compared with a single SC administration. The repeated monthly dosing for three doses resulted in moderate drug accumulation over time (accumulation ratio for  $AUC_{\tau}$  of approximately 1.2-fold for intravenous and 2.0-fold for SC).

Anti-etrolizumab antibodies were detected in two out of a total of 38 drug-treated patients. One patient was from the lowest dose cohort in the SAD stage (0.3 mg/kg intravenous) with positive ATA detected in a range of 1.6–2.02 titre units on study day 29 and all subsequent ATA sample collection days up to day 197. Another patient was from the lowest dose cohort in the MD stage of the study (0.5 mg/kg SC) with positive ATA confirmed by immunodepletion but with  $< 1.3$  titre units on study day 169 and 1.44 titre units on study day 197. In these two ATA positive patients, the ATA titre levels were low and close to the minimum reportable level (1.3 titre unit). There were no effects on PK profile for either of these patients nor were there any AEs suggestive of an allergic reaction.

**Pharmacodynamics**

Etrolizumab occupied  $\beta 7$  integrin on CD45RA- $\beta 7^{high}$  CD4+ T cells in all cohorts (ABS, % BL, figure 3). There was an observed

**Figure 2** Concentration–time profiles following single or multiple doses given by IV or SC administration. The lower limit of quantification is 0.0125 µg/ml. IV, intravenous; MD, multiple dose; SAD, single ascending dose; SC, subcutaneous; LLOQ, lower limit of quantitation.



dose-dependent trend in the duration of occupancy in the actively treated patients. For the cohorts receiving single intravenous doses of 0.3, 1.0 and 10 mg/kg, cohort mean occupancy was maintained for approximately 2 weeks, 6 weeks and 10 weeks, respectively. The extent and duration of β7 occupancy was similar in the 3 mg/kg SC and 3 mg/kg intravenous cohorts, with cohort mean occupancy maintained for approximately 10 weeks.

For the cohorts administered multiple SC doses of 0.5 mg/kg and 1.5 mg/kg etrolizumab, cohort mean occupancy was maintained for ~2–4 weeks postfinal dose (day 57), whereas in the cohorts dosed with 3 mg/kg SC and 4 mg/kg intravenous, there was an extended duration of occupancy which was maintained for ~8–12 weeks postfinal dose. The duration of occupancy was also longer when comparing the cohort receiving a single SC dose of 3 mg/kg etrolizumab (~10 weeks) compared with those receiving multiple SC doses of 3 mg/kg (~12 weeks).

Recovery of unoccupied β7 receptors on gut-homing T lymphocytes was associated with decreasing serum drug concentrations. A consistent PK–PD relationship was observed in both the single dose and MD cohorts in which a minimum serum concentration range of 0.05–2.7 µg/ml of etrolizumab (mean ± SD = 0.5 ± 0.6 µg/ml, median = 0.3 µg/ml) maintained occupancy of CD4+CD45RA-β7<sup>high</sup> T lymphocytes (see supplemental figure 1).

There was no change from baseline in the total lymphocyte count in patients who received etrolizumab (data not shown).

### Clinical activity

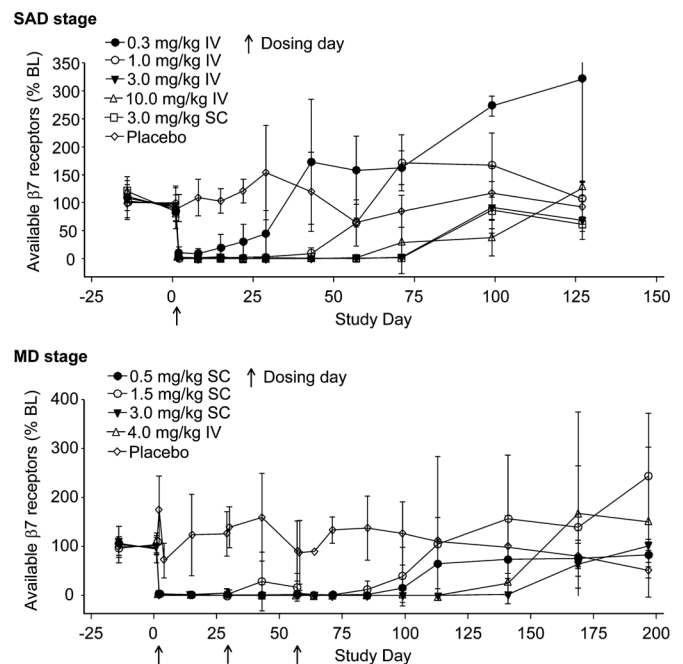
In the SAD stage, individual changes in MCS show a trend for a decrease in the MCS in the low dose etrolizumab treated groups, especially in those where etrolizumab was administered SC (figure 4). In the MD stage, there was a similar trend for decrease in MCS in the low dose SC groups treated with etrolizumab (figure 4). The trend for decrease in the MCS in the etrolizumab treated groups was not different from that observed in the placebo treated patients and is confounded by the imbalanced use of oral corticosteroids in the placebo treated patients compared with the etrolizumab treated groups (table 1). Endoscopy scores were evaluated as an exploratory end point and tracked well with the overall MCS (supplementary figure 2).

### DISCUSSION

The humanised monoclonal antibody etrolizumab targets the β7 subunit of the α4β7 and αEβ7 integrin heterodimer receptors. In this phase I study, etrolizumab was safe and well tolerated in patients with moderate to severely active UC. PK data indicate that etrolizumab has acceptable PK parameters to enable monthly SC administration. There were no early indications that etrolizumab is immunogenic on repeated intravenous or SC

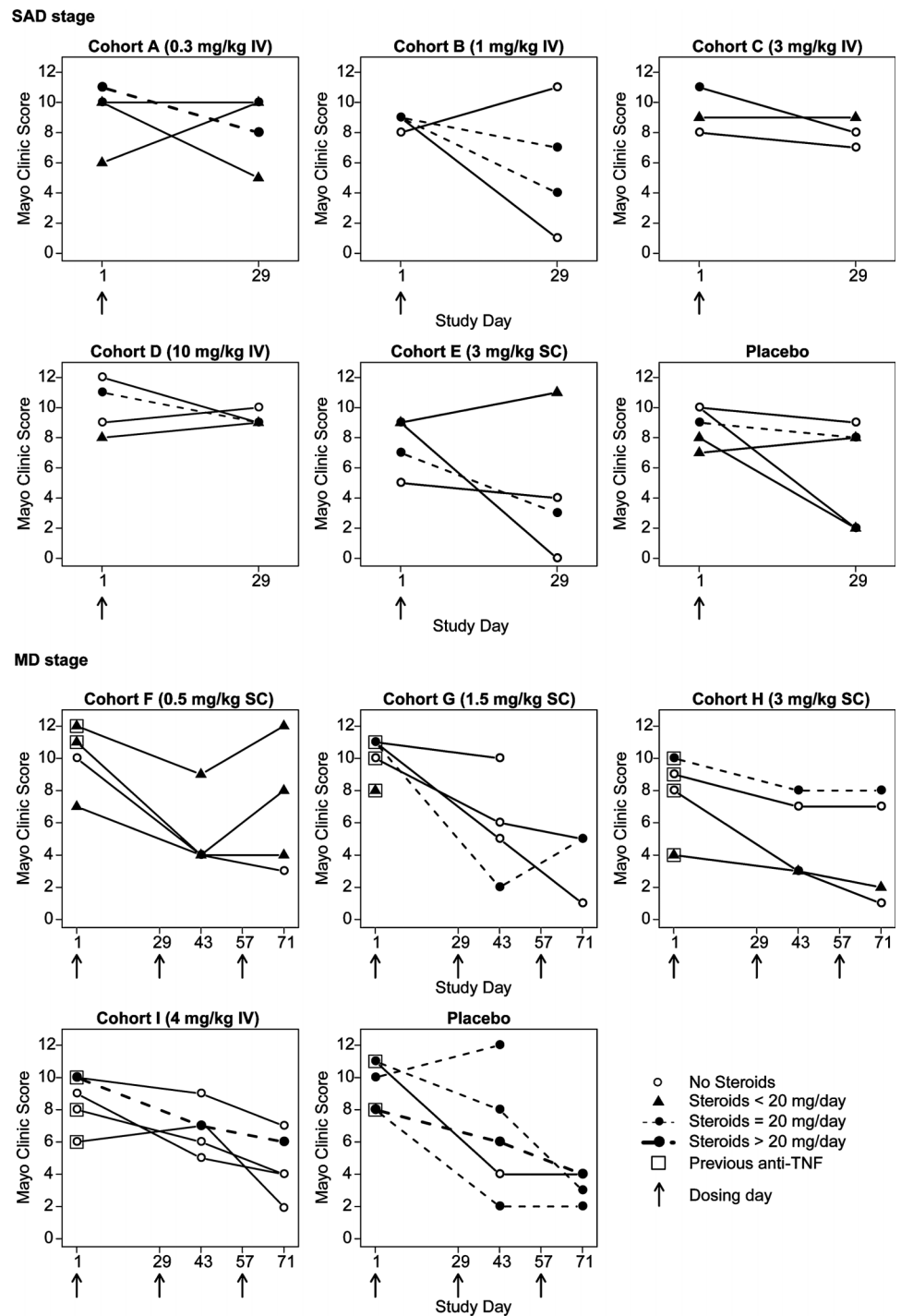
administration. Etrolizumab achieves immediate occupancy of β7 integrin expressed on peripheral blood T cells, the duration of which is dose-dependent. Although the numbers are small, and there is an imbalance in UC concomitant medication between placebo and the active treatment arms in the MD stage of the study, there is an early indication of clinical activity of etrolizumab in patients with severe UC.

Clinical studies have demonstrated efficacy with an anti-α4 integrin antibody (natalizumab) for the treatment of CD.<sup>4</sup> Unlike natalizumab, which blocks the function of both α4β1 and α4β7 heterodimers, etrolizumab does not interfere with the function of α4β1, an integrin heterodimer critical for the homing of leucocytes to the central nervous system through interactions with VCAM-1.<sup>41</sup> Notably, treatment with natalizumab has been associated with confirmed cases of PML.<sup>42</sup> The selectivity of etrolizumab was confirmed by its inability to inhibit adhesion of α4β1+α4β7- Ramos cells to VCAM-1 at concentrations as high as 100 nM (data not shown). Consistent with these in vitro data, preclinical rodent studies have demonstrated that blockade of β7 integrin can prevent the recruitment of T cells to the inflamed colon in a mouse model of IBD while having no effect on



**Figure 3** Occupancy (mean ± SD) of β7 integrin on CD4+CD45RA-β7<sup>high</sup> T lymphocytes following administration of etrolizumab or placebo. BL, baseline; IV, intravenous; MD, multiple dose; SAD, single ascending dose; SC, subcutaneous.

**Figure 4** Individual patient changes in Mayo Clinic score. IV, intravenous; MD, multiple dose; SAD, single ascending dose; SC, subcutaneous; TNF, tumour necrosis factor.



lymphocyte homing to the brain in a mouse model of multiple sclerosis.<sup>31 34 43</sup> In addition, healthy cynomolgus monkeys treated with etrolizumab had an increase in peripheral blood mucosal-homing CD45RA-β7<sup>high</sup> CD4<sup>+</sup> T cells with no substantial effect on CD4<sup>+</sup> T cell subsets that home preferentially into non-mucosal sites.<sup>31</sup> Following 26 weeks of treatment, etrolizumab induced a dose-dependent reversible decrease in gut-associated lymphoid tissue in cynomolgus monkeys and lymphocytes in murine intestinal lamina propria.<sup>32</sup> These findings point to the ability of etrolizumab to specifically inhibit trafficking of mucosal-associated leucocytes implicated in disease pathogenesis of IBD while sparing the function of T cell subsets expressing other integrins subunits, such as α4β1, which are critical for normal host protective immune responses.

Clinical efficacy has also been demonstrated with the anti-α4β7 antibody vedolizumab (MLN-0002, LDP-02) in UC and CD.<sup>35 36</sup> As with vedolizumab, etrolizumab binds α4β7 but is unique in that it also blocks binding of αEβ7 to its ligand E-cadherin. Thus, etrolizumab could affect leucocyte composition within the gut mucosa through multiple mechanisms. First, as discussed above, it could block α4β7-expressing leucocytes from entering the gut by inhibiting their extravasation through MAdCAM-1-expressing mucosal endothelial venules. Notably, MAdCAM-1 expression is increased in patients with UC and CD,<sup>13</sup> and antibodies against β7 or α4β7 are effective in blocking migration of lymphocytes into the inflamed gut mucosa in animal models.<sup>31 33 34 43</sup> Second, by inhibiting αEβ7 interactions with E-cadherin, it could directly affect retention of leucocytes within

the intestinal mucosa.<sup>17</sup>  $\alpha$ E integrin expression is very low in peripheral blood and is found primarily on gut resident cells, including intraepithelial lymphocytes<sup>44</sup> and dendritic cells.<sup>45</sup> More than 90% of intraepithelial lymphocytes and 50% of T cells in the human intestinal lamina propria express  $\alpha$ E $\beta$ 7 integrin, suggesting a distinctive role in mucosal immunology.<sup>46–47</sup> In addition,  $\alpha$ E $\beta$ 7 is expressed on intestinal dendritic cells, which have been implicated in the generation of gut-tropic effector T cells.<sup>48</sup> Importantly, intraepithelial lymphocytes may exhibit cytotoxic activity against epithelial cells<sup>19–20</sup> and cells expressing  $\alpha$ E $\beta$ 7 integrin are pathogenic in mouse models of colitis and acute graft versus host disease.<sup>23–49</sup> Thus, etrolizumab represents a novel therapeutic approach for UC by virtue of its unique ability to inhibit both recruitment and retention of potentially pathogenic immune cells in the inflamed gut mucosa.

$\alpha$ 4 $\beta$ 7 And  $\alpha$ E $\beta$ 7 can regulate trafficking and retention of immune cells in both the intestine and other mucosal tissues such as the lung. Blockade of these integrins could theoretically impact immune function at these sites, potentially leading to opportunistic infection. Intraepithelial lymphocytes expressing  $\alpha$ E $\beta$ 7 play an important role in intestinal immunity to *Toxoplasma gondii*.<sup>50</sup> However,  $\alpha$ E $\beta$ 7 has recently been reported to be dispensable for immunity to the intestinal helminth pathogen *Trichuris muris*.<sup>51</sup> Thus,  $\alpha$ E $\beta$ 7 and intraepithelial lymphocytes participate in mucosal immune responses but their relative importance is unclear and would likely need to be evaluated on a pathogen-by-pathogen basis. We have not directly evaluated the effect of  $\beta$ 7 integrin blockade in animal models of opportunistic or enteric infection, but in our 26-week toxicology studies in mice and cynomolgus monkeys, there were no instances of enteric infection despite an etrolizumab-induced decrease in gut-associated lymphoid tissue.<sup>32</sup> Similarly, there were no pulmonary safety signals in our study. In addition, our observation of no change from baseline in the total blood lymphocyte count in patients who received etrolizumab reflects the relatively small percentage of leucocytes affected by binding of etrolizumab.

The favourable safety profile observed with etrolizumab treatment in this trial warrants larger and longer-term studies to confirm our findings with etrolizumab in moderate to severe UC. A definitive phase II study is currently underway.

**Acknowledgements** We wish to thank the patients and investigators who participated in this study. We thank Dr Banmeet Anand for his help in PK data analysis in the early stages of this study. Medical writing assistance was provided by Genentech, Inc.

**Contributors** PR: principal investigator, patient selection, patient-related study procedures, protocol design, manuscript writing. RF, AS, DCB, BB, JM: principal investigator, patient selection, patient-related study procedures. DH, SS: principal investigator, patient selection, patient-related study procedures, protocol design. MW, XW, MK, DL, DD, JE: data analysis, manuscript writing. MT: data analysis. JV: early PK/PD analysis and modelling. SO: medical monitor, protocol design, trial design, data analysis, manuscript writing. All authors have read and approved the final manuscript.

**Funding** This study was sponsored by Genentech, Inc.

**Competing interests** PR: honoraria for participating in scientific advisory boards by Genentech. RF: research grant funding from Genentech. DH: advisory board funding from Genentech. AS: payment for talks or consultancy or scientific research projects from Abbott, ArdeyPharm, Bayer-Schering, Centocor, Essex, Dr. Falk Pharma, Ferring, Fresenius, Shire, Merckle-Recordati, MSD, Travacare, UCB, Vifor and Genentech. DCB: honoraria for participating in scientific advisory boards organised by Genentech. All of his activities and contracts are in conformity with the 'FSA-Kodex Fachkreise' (voluntary self-monitoring code for expert consultants to the pharmaceutical industry), have been checked by the Medicolegal Department of Charité and have been approved by the directorate of the Faculty of Medicine. BB: Abbott, Merck, GSK, BMS, Amgen, Millenium Pharmaceuticals and Genentech. SS: Ad board services for Genentech. JM: Ad board services for Genentech. MW, MT, JV, XW, MK, DL, DD, JE and SO are employees of Genentech.

**Patient consent** Obtained.

**Ethics approval** Ethics approval was provided by Institutional review boards at each study site approved the protocol.

**Provenance and peer review** Not commissioned; externally peer reviewed.

**Open Access** This is an Open Access article distributed in accordance with the Creative Commons Attribution Non Commercial (CC BY-NC 3.0) license, which permits others to distribute, remix, adapt, build upon this work non-commercially, and license their derivative works on different terms, provided the original work is properly cited and the use is non-commercial. See: <http://creativecommons.org/licenses/by-nc/3.0/>

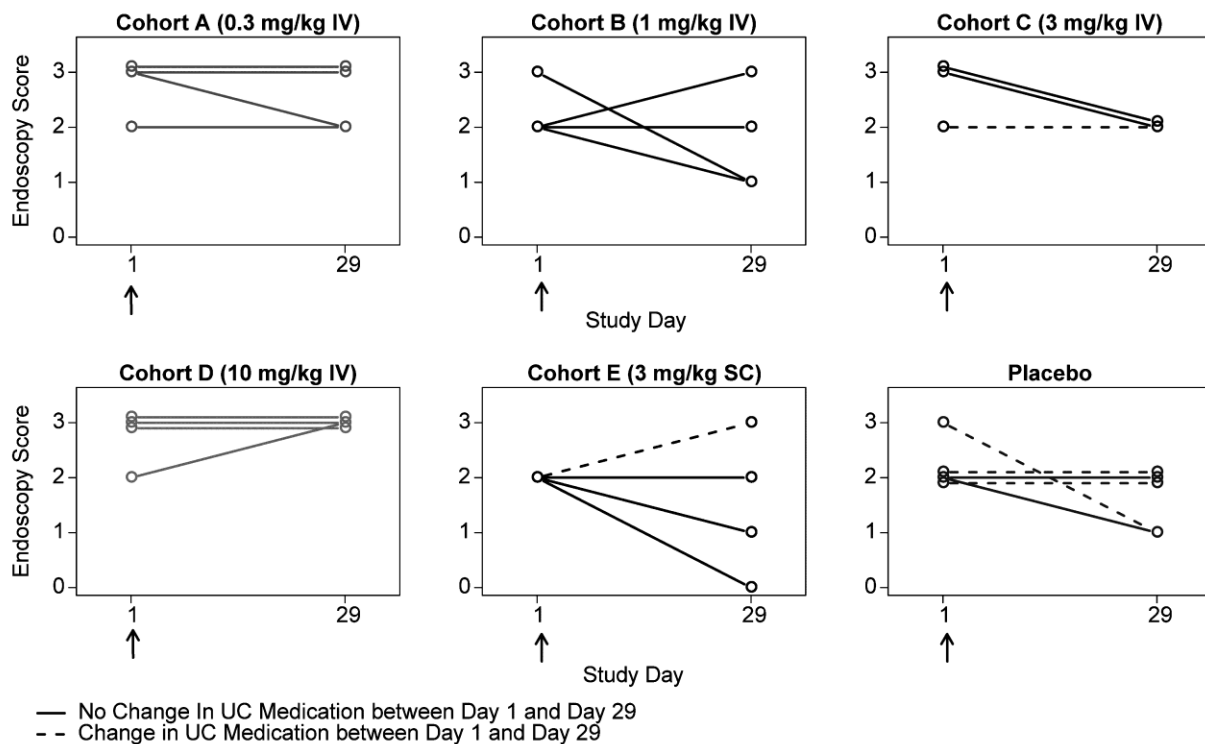
## REFERENCES

- Baumgart DC, Sandborn WJ. Inflammatory bowel disease: clinical aspects and established and evolving therapies. *Lancet* 2007;369:1641–57.
- Autenrieth DM, Baumgart DC. Toxic megacolon. *Inflamm Bowel Dis*. Published Online First: 29 August 2011. doi:10.1002/ibd.2184
- Hanauer SB, Feagan BG, Lichtenstein GR, et al. Maintenance infliximab for Crohn's disease: the ACCENT I randomized trial. *Lancet* 2002;359:1541–9.
- Sandborn WJ, Colombel JF, Enns R, et al. Natalizumab induction and maintenance therapy for Crohn's disease. *N Engl J Med* 2005;353:1912–25.
- Van Assche G, D'Haens G, Noman M, et al. Randomized, double-blind comparison of 4 mg/kg versus 2 mg/kg intravenous cyclosporine in severe ulcerative colitis. *Gastroenterology* 2003;125:1025–31.
- Sjöberg M, Walch A, Meshkat M, et al. Infliximab or cyclosporine as rescue therapy in hospitalized patients with steroid-refractory ulcerative colitis: A retrospective observational study. *Inflamm Bowel Dis* 2012;18:212–18.
- Thomas S, Baumgart DC. Targeting leucocyte migration and adhesion in Crohn's disease and ulcerative colitis. *Inflammopharmacology* 2012;20:1–18.
- von Andrian UH, Mackay CR. T cell function and migration: two sides of the same coin. *N Engl J Med* 2000;343:1020–34.
- Gorfu G, Rivera-Nieves J, Ley K. Role of beta7 integrins in intestinal lymphocyte homing and retention. *Curr Mol Med* 2009;9:836–50.
- Chan BM, Elices MJ, Murphy E, et al. Adhesion to vascular cell adhesion molecule 1 and fibronectin. Comparison of  $\alpha$ 4 $\beta$ 1 (VLA 4) and  $\alpha$ 4 $\beta$ 7 on the human B cell line JY. *J Biol Chem* 1992;267:8366–70.
- Ruegg C, Postigo AA, Sikorski EE, et al. Role of integrin  $\alpha$ 4 $\beta$ 7/ $\alpha$ 4 $\beta$ P in lymphocyte adherence to fibronectin and VCAM 1 and in homotypic cell clustering. *J Cell Biol* 1992;117:179–89.
- Berlin C, Berg EL, Briskin MJ, et al.  $\alpha$ 4 $\beta$ 7 integrin mediates lymphocyte binding to the mucosal vascular addressin MAdCAM 1. *Cell* 1993;74:185–95.
- Briskin M, Winsor-Hines D, Shyjan A, et al. Human mucosal addressin cell adhesion molecule-1 is preferentially expressed in intestinal tract and associated with lymphoid tissue. *Am J Pathol* 1997;151:97–110.
- Souza HS, Elia CC, Spencer J, et al. Expression of lymphocyte-endothelial receptor ligand pairs,  $\alpha$ 4 $\beta$ 7/MAdCAM 1 and OX40/OX40 ligand in the colon and jejunum of patients with inflammatory bowel disease. *Gut* 1999;45:856–63.
- Cepek KL, Parker CM, Madara JL, et al. Integrin  $\alpha$ E $\beta$ 7 mediates adhesion of T lymphocytes to epithelial cells. *J Immunol* 1993;150:3459–70.
- Karecla PL, Bowden SJ, Green SJ, et al. Recognition of E-cadherin on epithelial cells by the mucosal T cell integrin  $\alpha$ M290 $\beta$ 7 ( $\alpha$ E $\beta$ 7). *Eur J Immunol* 1995;25:852–6.
- Schön MP, Arya A, Murphy EA, et al. Mucosal T lymphocyte numbers are selectively reduced in integrin alpha E (CD103)-deficient mice. *J Immunol* 1999;162:6641–9.
- Hadley GA, Bartlett ST, Via CS, et al. The epithelial cell-specific integrin, CD103 (alpha E integrin), defines a novel subset of alloreactive CD8+ CTL. *J Immunol* 1997;159:3748–56.
- Pang M, Abe T, Fujihara T, et al. Up-regulation of  $\alpha$ E $\beta$ 7, a novel integrin adhesion molecule, on T cells from systemic lupus erythematosus patients with specific epithelial involvement. *Arthritis Rheum* 1998;41:1456–63.
- Buri C, Burri P, Bähler P, et al. Cytotoxic T cells are preferentially activated in the duodenal epithelium from patients with florid coeliac disease. *J Pathol* 2005;206:178–85.
- Elewaut D, Van Damme N, De Keyser F, et al. Altered expression of  $\alpha$ E $\beta$ 7 integrin on intra-epithelial and lamina propria lymphocytes in patients with Crohn's disease. *Acta Gastroenterol Belg* 1998;61:288–94.
- Oshitani N, Watanabe K, Maeda K, et al. Differential expression of homing receptor CD103 on lamina propria lymphocytes and association of CD103 with epithelial adhesion molecules in inflammatory bowel disease. *Int J Mol Med* 2003;12:715–19.
- Ludviksson BR, Strober W, Nishikomori R, et al. Administration of mAb against  $\alpha$ E $\beta$ 7 prevents and ameliorates immunization-induced colitis in IL-2 $^{-/-}$  mice. *J Immunol* 1999;162:4975–82.
- Barrett JC, Lee JC, Lees CW, et al. Genome-wide association study of ulcerative colitis identifies three new susceptibility loci, including the HNF4A region. *Nat Genet* 2009;41:1330–4.

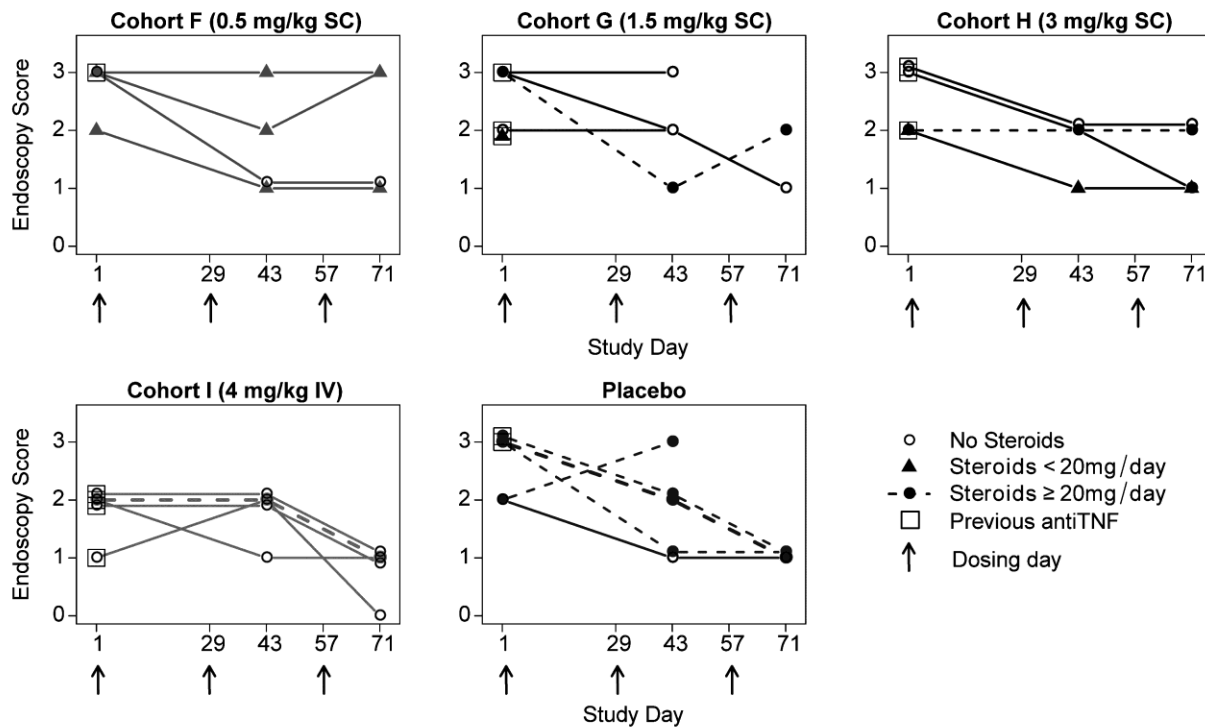


- 25 van Sommeren S, Visschedijk MC, Festen EA, *et al.* HNF4 $\alpha$  and CDH1 are associated with ulcerative colitis in a Dutch cohort. *Inflamm Bowel Dis* 2011;17:1714–18.
- 26 Muise AM, Walters TD, Glowacka WK, *et al.* Polymorphisms in E-cadherin (CDH1) result in a mis-localised cytoplasmic protein that is associated with Crohn's disease. *Gut* 2009;58:1121–7.
- 27 Schneider MR, Dahlhoff M, Horst D, *et al.* A key role for E-cadherin in intestinal homeostasis and Paneth cell maturation. *PLoS One* 2010;5:e14325.
- 28 Hermiston ML, Gordon JI. Inflammatory bowel disease and adenomas in mice expressing a dominant negative N-cadherin. *Science* 1995;270:1203–7.
- 29 Holzmann B, McIntyre BW, Weissman IL. Identification of a murine Peyer's patch—specific lymphocyte homing receptor as an integrin molecule with an alpha chain homologous to human VLA-4  $\alpha$ . *Cell* 1989;56:37–46.
- 30 Hu M, Crowe DT, Weissman IL, *et al.* Cloning and expression of mouse integrin  $\beta$ 7 ( $\beta$ 7): a functional role in Peyer's patch-specific lymphocyte homing. *Proc Natl Acad Sci U S A* 1992;89:8254–8.
- 31 Stefanich EG, Danilenko DM, Wang H, *et al.* A humanized monoclonal antibody targeting the  $\beta$ 7 integrin selectively blocks intestinal homing of T lymphocytes. *Br J Pharmacol* 2011;162:1855–70.
- 32 Danilenko DM, Wang H. The yin and yang of immunomodulatory biologics: assessing the delicate balance between benefit and risk. *Toxicol Pathol* 2012;40:272–87.
- 33 Hesterberg PE, Winsor-Hines D, Briskin MJ, *et al.* Rapid resolution of chronic colitis in the cotton-top tamarin with an antibody to a gut-homing integrin alpha 4 beta 7. *Gastroenterol* 1996;111:1373–80.
- 34 Picarella D, Hurlburt P, Rottman J, *et al.* Monoclonal antibodies specific for beta7 integrin and mucosal addressin cell adhesion molecule-1 (MAdCAM-1) reduce inflammation in the colon of scid mice reconstituted with CD45RBhigh CD4+ T cells. *J Immunol* 1997;158:2099–106.
- 35 Feagan BG, Greenberg GR, Wild G, *et al.* Treatment of ulcerative colitis with a humanized antibody to the  $\alpha$ 4 $\beta$ 7 integrin. *N Engl J Med* 2005;352:2499–507.
- 36 Feagan BG, Greenberg GR, Wild G, *et al.* Treatment of active Crohn's disease with MLN0002, a humanized antibody to the alpha4beta7 integrin. *Clin Gastroenterol Hepatol* 2008;6:1370–7.
- 37 Pullen N, Molloy E, Carter D, *et al.* Pharmacological characterization of PF-00547659, an anti-human MAdCAM monoclonal antibody. *Br J Pharm* 2009;157:281–93.
- 38 Vermeire S, Ghosh S, Panes J, *et al.* Safety and efficacy of PF-00547,659, a fully human anti-MAdCAM antibody, in ulcerative colitis. Results of a first in-human study. *Gastroenterology* 2009;136:A-132.
- 39 Schroeder KW, Tremaine WJ, Ilstrup DM. Coated oral 5-aminosalicylic acid therapy for mildly to moderately active ulcerative colitis. A randomized study. *N Engl J Med* 1987;317:1625–9.
- 40 Butcher EC, Williams M, Youngman K, *et al.* Lymphocyte trafficking and regional immunity. *Adv Immunol* 1999;72:209–53.
- 41 Yednock TA, Cannon C, Fritz LC, *et al.* Prevention of experimental autoimmune encephalomyelitis by antibodies against alpha 4 beta 1 integrin. *Nature* 1992;356:63–6.
- 42 Warnke C, Menge T, Hartung HP, *et al.* Natalizumab and progressive multifocal leukoencephalopathy: what are the causal factors and can it be avoided? *Arch Neurol* 2010;67:923–30.
- 43 Engelhardt B, Laschinger M, Schulz M, *et al.* The development of experimental autoimmune encephalomyelitis in the mouse requires alpha4-integrin but not alpha4beta7-integrin. *J Clin Invest* 1998;102:2096–105.
- 44 Farstad IN, Halstensen TS, Lien B, *et al.* Distribution of beta7 integrins in human intestinal mucosa and organized gut-associated lymphoid tissue. *Immunology* 1996;89:227–37.
- 45 Jaensson E, Uronen-Hansson H, Pabst O, *et al.* Small intestinal CD103+ dendritic cells display unique functional properties that are conserved between mice and humans. *J Exp Med* 2008;205:2139–49.
- 46 Parker CM, Cepek KL, Russell GJ, *et al.* A family of beta 7 integrins on human mucosal lymphocytes. *Proc Natl Acad Sci U S A* 1992;89:1924–8.
- 47 Higgins JM, Mandelbrot DA, Shaw SK, *et al.* Direct and regulated interaction of integrin alphaEbeta7 with E-cadherin. *J Cell Biol* 1998;140:197–210.
- 48 Johansson-Lindbom B, Svensson M, Pabst O, *et al.* Functional specialization of gut CD103+ dendritic cells in the regulation of tissue-selective T cell homing. *J Exp Med* 2005;202:1063–73.
- 49 Liu K, Anthony BA, Yearsly MM, *et al.* CD103 deficiency prevents graft-versus-host disease but spares graft-versus-tumor effects mediated by alloreactive CD8 T cells. *PLoS One* 2011;6:e21968.
- 50 Buzoni-Gatel D, Debbabi H, Moretto M, *et al.* Intraepithelial lymphocytes traffic to the intestine and enhance resistance to *Toxoplasma gondii* oral infection. *J Immunol* 1999;162:5846–52.
- 51 Mullaly SC, Burrows K, Antignano F, *et al.* Assessing the role of CD103 in immunity to an intestinal helminth parasite. *PLoS One* 2011;6:e19580.

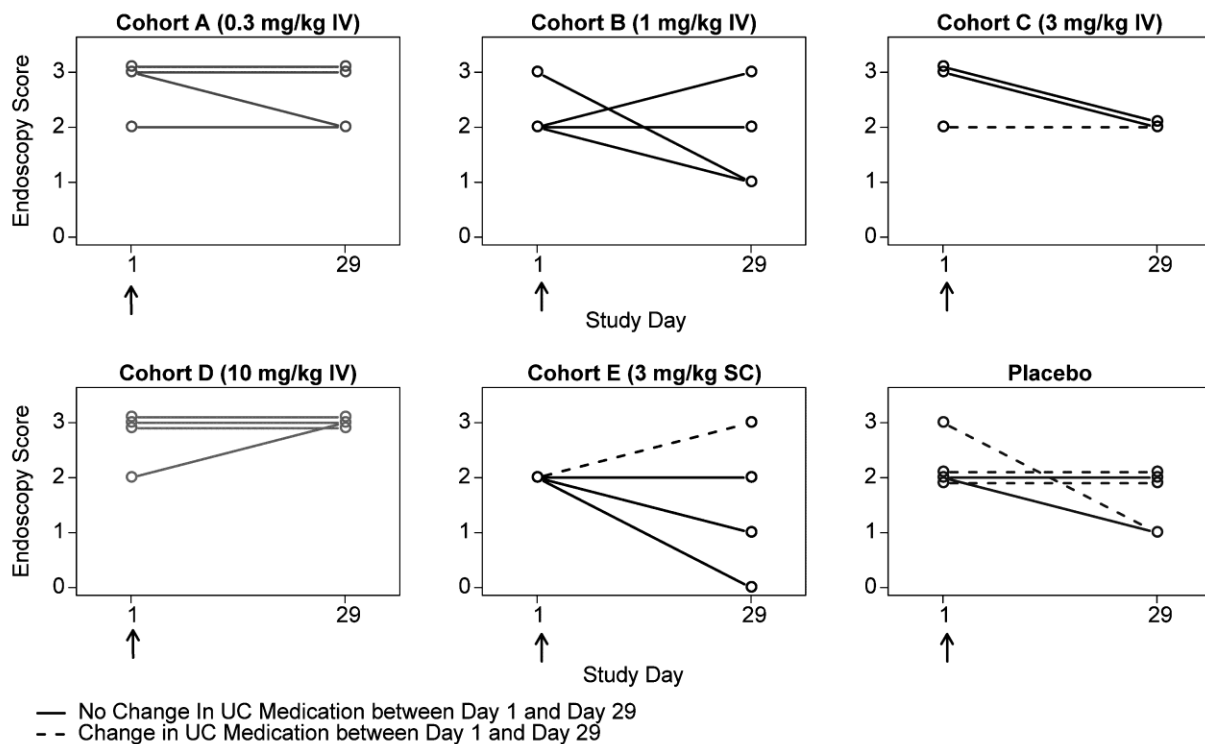
**SAD Stage**



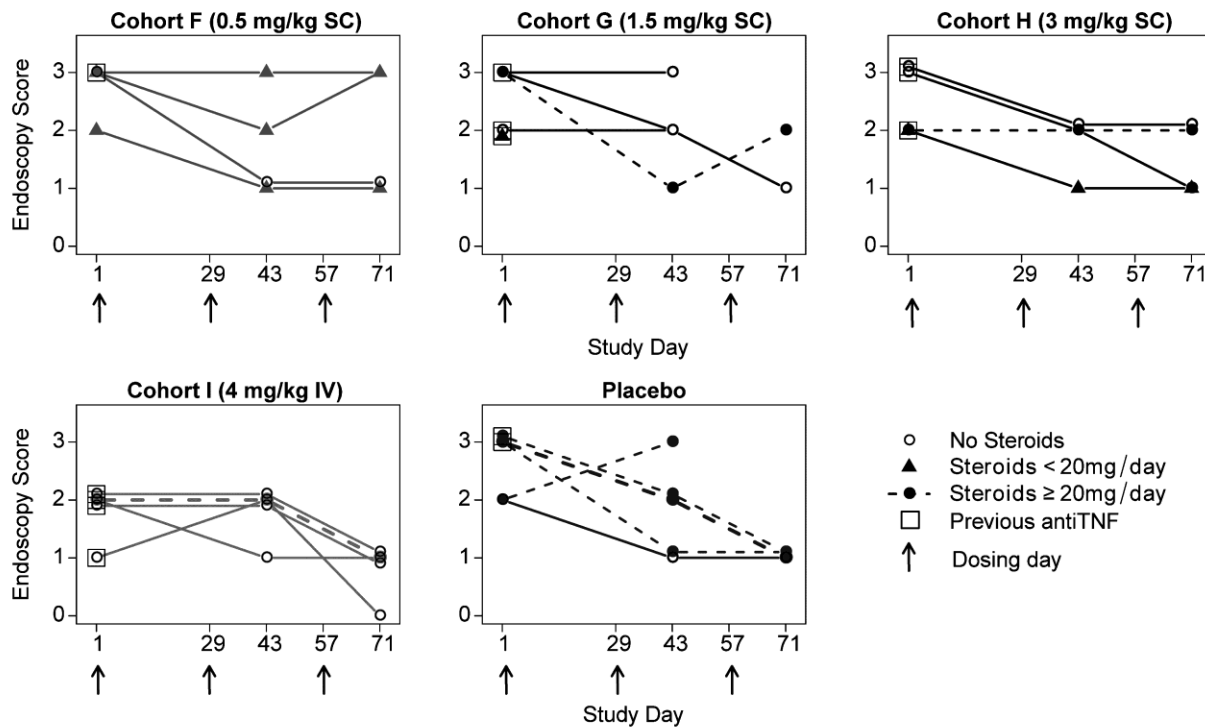
**MD Stage**



**SAD Stage**



**MD Stage**



Supplementary Figure 1. Representative PK and PD plots for individual patients in each cohort are shown. PK values reported are based on the observed data and correspond to the first time point at which receptor occupancy is released (i.e., <100% saturation.)

Supplementary Figure 2. Individual patient changes in endoscopy scores for SAD and MD stages.

Supplementary Table 1. Patient demographics and baseline characteristics.

SAD cohort.

	<b>Placebo (n=5)</b>	<b>0.3 mg/kg IV (n=4)</b>	<b>1 mg/kg IV (n=4)</b>	<b>3 mg/kg IV (n=4)</b>	<b>3 mg/kg SC (n=4)</b>	<b>10 mg/kg IV (n=4)</b>
Gender, male (%)	2 (40)	4 (100)	4 (100)	3 (75)	1(25)	3(75)
Age (years), mean (SD)	30.2(11) 6 (5-29)	41.5 (7.9)	45 (17.6)	43.3 (6.4)	32.3 (9.8) 6.6 (2-8)	39.5 (7.9) 8.9 (3-20)
Disease Duration years, median (range)		6.6 (4-9)	13.3 (8- 24)	14.9 (7- 23)		
Concomitant drug treatment, n (%)	4 (80)	2 (50)	1 (25)	3 (75)	2 (50)	4 (75)
5-ASA	1 (20)	0	0	2 (50)	1 (25)	0
Azathioprine	0 (0)	1 (25)	0	0	0	1 (25)
Mercaptopurine	0 (0)	0	0	0	1 (25)	0
Methotrexate	3 (60)	3 (75)	2 (50)	2 (50)	2 (50)	2 (50)
Corticosteroids						
Baseline MCS, median (range)	9 (7–10)	10 (6– 11)	9 (8-9)	10 (8- 11)	8 (5-9)	10 (8-12)

MD cohort.

	<b>Placebo (n=5)</b>	<b>0.5 mg/kg SC</b>	<b>1.5 mg/kg SC (n=5)</b>	<b>3 mg/kg SC (n=4)</b>	<b>4 mg/kg IV (n=5)</b>

		(n=4)			
Gender, male (%)	3 (60)	2 (50)	3 (60)	3 (75)	5 (100)
Age (years), mean (SD)	39 (19)	46.3 (11)	49.6	39.8	39 (15.3)
Disease Duration years, median (range)	5.3 (2-25)	6 (4-17)	(15.4)	(16.6)	5.2 (3-20)
Concomitant drug treatment, n (%)					
5-ASA	2 (60)	4 (100)	2 (40)	2 (50)	3 (60)
Azathioprine	1 (20)	0	1 (20)	0	1 (20)
Methotrexate	0 (0)	0	0	1 (25)	1 (20)
Corticosteroids	4 (80)	3 (75)	2 (40)	2 (50)	1 (20)
Previous anti-TNF therapy	2 (40)	2 (50)	2 (40)	4 (100)	4 (80)
Baseline MCS, median (range)	10 (8-11)	10.5 (7-12)	11 (8-11)	8.5 (4-10)	9 (6-10)

SAD = single ascending dose; MD = multiple dose; SD = standard deviation; SC = subcutaneous; IV = intravenous; 5-ASA = 5-aminosalicylic acid; TNF = tumor necrosis factor; MCS = Mayo Clinic Score; NA = not applicable.

